



INDOFINE Chemical Company, Inc.

121 Stryker Lane, Bldg. 30, Suite 1 • Hillsborough, NJ 08844 • U.S.A.

Phone: (908) 359-6778 • FAX: (908) 359-1179

website: www.indofinechemical.com

e-mail: chemical@indofinechemical.com

CERTIFICATE OF ANALYSIS

Catalog Number: 06-1540

Product Name: **NARINGENIN CHALCONE**

CAS Number: [73692-50-9]

Lot Number: 2103528

Chemical Formula: C₁₅H₁₂O₅

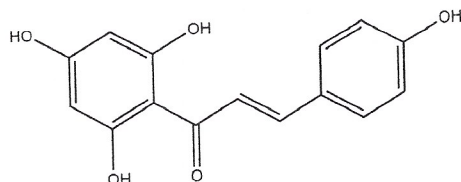
Molecular Weight: 272.26

Appearance: Yellow powder

Loss on Drying: 1.9%

Storage: Store in a cool, dry place

Purity(HPLC): 99.71%



Prepared by:
Ramesh Mandadi
Ramesh Mandadi
Director of Operations

Reviewed and Approved by:
Sujata Moton
Sujata Moton
VP



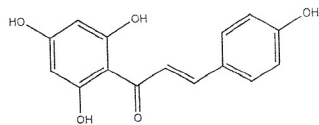
INDOFINE Chemical Company, Inc.

121 Stryker Lane, Bldg. 30, Suite 1 • Hillsborough, NJ 08844 • U.S.A.

Phone: (908) 359-6778 • FAX: (908) 359-1179

website: www.indofinechemical.com

e-mail: chemical@indofinechemical.com



HPLC ANALYSIS

Catalog No.: 06-1540

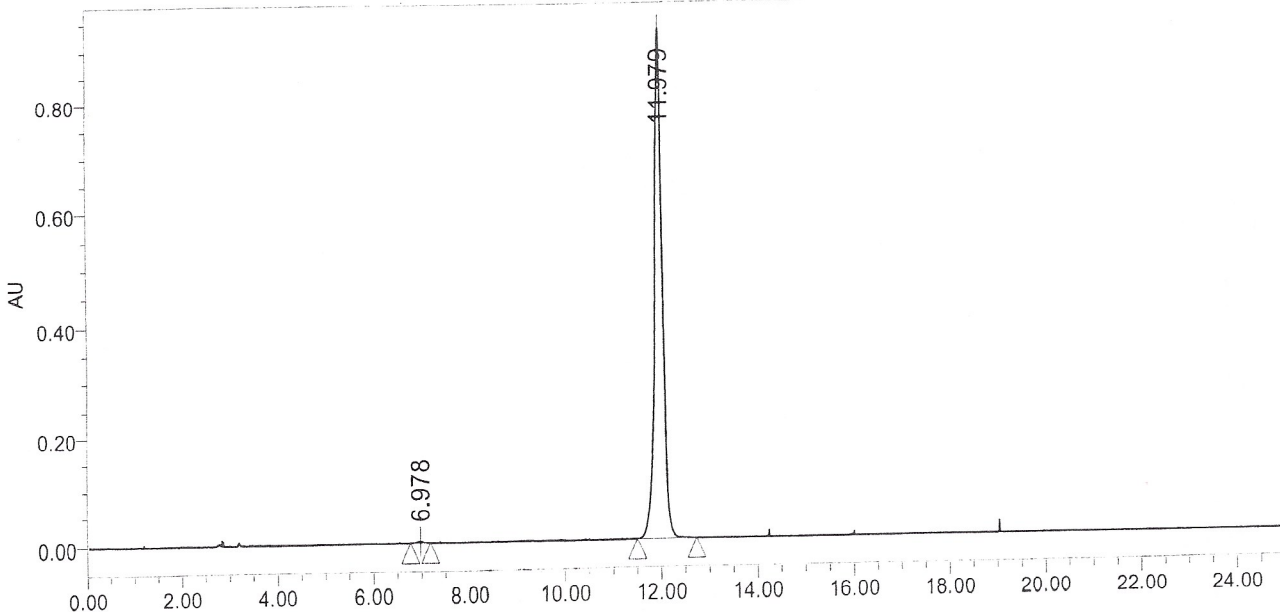
Product Name: Naringenin chalcone

Lot No.: 2103528

SAMPLE INFORMATION

Sample Name:	Naringenin chalcone	Acquired By:	prf01
Sample Type:		Sample Set Name:	
Vial:	105	Acq. Method Set:	Naringenin chalcone
Injection #:	1	Processing Method:	samples
Injection Volume:	10.00 ul		
Run Time:	25.0 Minutes		

Auto-Scaled Chromatogram



Peak Results

Name	RT	Area	% Area	USP Plate Count	USP Resolution
1	6.978	29802	0.29	18423.79	
2	11.979	10389117	99.71	29801.51	20.06

Prepared by:

Ramesh Mandadi

Ramesh Mandadi

Director of Operations

Reviewed and Approved by:

Sujata Moton

Sujata Moton

VP